

METROX GOLD MINING LIMITED

COMPANY PROFILE

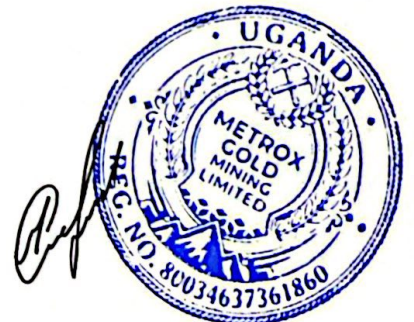


Metrox Gold Mining Limited (MGML)

Bardege Division, Bardege Parish, 3B Airfield Road, Gulu Uganda

Tel: 256 774270584

Email: metroxcorp@gmail.com



INTRODUCTION

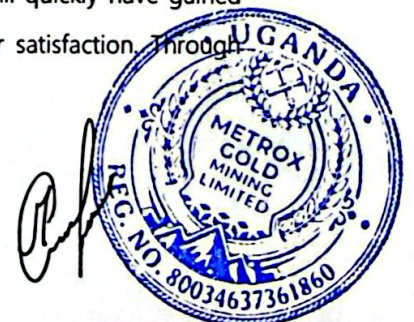
Metrox Gold Mining Limited is an exploration and mining enterprise majoring in gold production with offices located in Kampala, where the founders' vision and dedications are to shape a legacy of excellence in Uganda. Established with a commitment to quality and driven by a passion for the mineral sector and other innovations. Metrox Gold Mining Limited will stand as a beacon of reliability and ingenuity in exploration and mining activities. Our journey began with a simple yet profound goal: to redefine standards and exceed expectations. Today, we continue to uphold these principles, delivering unparalleled quality in every product and service we offer. Our relentless pursuit of perfection drives us to constantly innovate, ensuring that we not only meet but exceed the evolving needs of our customers. At Metrox Gold Mining Limited, quality isn't just a promise; it's our cornerstone. From the sourcing of materials to the final delivery, every step of our process is meticulously crafted to deliver excellence.

MGML is committed to excellence in diverse sectors, delivering innovative solutions and contributing to societal progress. Our Company is established on the principles of integrity, commitment, and innovation, we have grown into a dynamic force in the business landscape where innovation meets reliability, and excellence is our standard. As a premier supplier in MGML, we pride ourselves on delivering not just products, but solutions that exceed expectations. Backed by years of expertise and a passion for excellence, we are committed to providing unparalleled quality, unmatched service, and seamless collaboration. With a relentless focus on customer satisfaction, we continuously strive to anticipate market needs and tailor our offerings to exceed them. At MGML, we don't just supply goods; we forge lasting partnerships, driving success for our clients and propelling industries forward. Join us on the journey to excellence, where every interaction is an opportunity to elevate your business.

1.1 COMPANY BACKGROUND

Metrox Gold Mining Limited (MGML) was founded in March 2026 by Mr Luhovkin Serhii of PO BOX 361952, Gulu Uganda, with a bold vision to revolutionize Uganda's Gold Mining Sector. Drawing upon their extensive experience and passion for mining and innovation, the founder set out to establish a company that would not only deliver exceptional products but also redefine industry standards and exceed customer expectations.

From its humble beginnings as a small startup, Metrox Gold Mining Limited will quickly have gained recognition for its unwavering commitment to quality, integrity, and customer satisfaction. Through



strategic partnerships, relentless dedication, and a customer-centric approach, the company rapidly expanded its reach and diversified its product offerings, cementing its position as a trusted leader in the Ugandan sector.

Over the years, MGML has remained at the forefront of innovation, investing heavily in research and development to drive continuous improvement and stay ahead of evolving market trends. Leveraging cutting-edge technologies and a team of skilled professionals, the company has consistently delivered groundbreaking solutions that address the most pressing challenges facing its customers.

Today, MGML stands as a beacon of excellence in the Uganda landscape, serving a diverse clientele ranging from small businesses to multinational corporations. With a global footprint and a reputation for reliability and innovation, the company remains committed to its founding principles of quality, integrity, and customer-centricity, as it continues to push the boundaries of possibility and shape the future of Uganda.

1.2. Company Vision

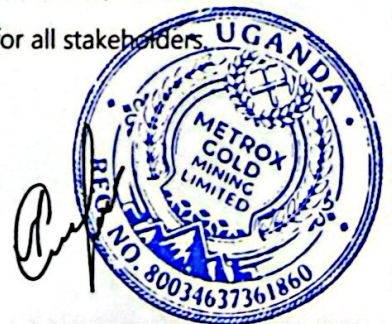
To be a globally recognized leader in mining and gold production in the context of investment and innovation, driving sustainable growth and making a positive impact on communities through the mining Sector in Uganda.

Driven by innovation, guided by integrity, and fueled by a relentless pursuit of excellence, we envision a future where boundaries are shattered, and possibilities are endless. Our vision is to pioneer new horizons, revolutionize standards, and inspire progress at every turn. With a steadfast commitment to quality and an unwavering dedication to our customer's success, we envision a world where every interaction with MGML is a testament to the extraordinary.

1.3. Mission

Our mission is to empower our partners with unparalleled quality, innovative solutions, and unwavering support in exploration and mining while ensuring the highest standards of ethical business practices.

We are dedicated to fostering lasting relationships built on trust, reliability, and mutual success. Through our relentless pursuit of excellence and commitment to exceeding expectations, we strive to be the catalyst for transformation in MGML, driving progress and prosperity for all stakeholders.



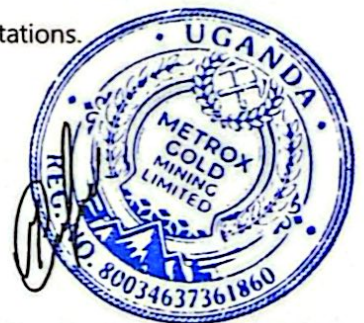
1.4. Core Values

1. **Excellence:** We are committed to delivering excellence in every aspect of our business, from product quality to customer service, setting new standards and continuously raising the bar.
2. **Integrity:** We conduct ourselves with honesty, transparency, and accountability, earning the trust and respect of our partners through ethical and principled behavior.
3. **Innovation:** We embrace creativity, curiosity, and adaptability, fostering a culture of innovation that drives continuous improvement and fuels our pursuit of groundbreaking solutions.
4. **Collaboration:** We value collaboration and teamwork, recognizing that our collective strength and diverse perspectives are the keys to achieving our shared goals and overcoming challenges.
5. **Customer-Centricity:** We prioritize the needs and goals of our customers above all else, striving to anticipate their needs, exceed their expectations, and deliver solutions that inspire confidence and drive success.
6. **Sustainability:** We are committed to environmental stewardship, social responsibility, and sustainable business practices, striving to minimize our ecological footprint and make a positive impact on the communities we serve.
7. **Empowerment:** We empower our employees to unleash their full potential, providing them with the resources, support, and opportunities they need to thrive personally and professionally, driving innovation and growth.

1.5. Founding Principles

These founding principles guide everything we do at MGML, shaping our decisions, driving our actions, and inspiring us to continually raise the bar for excellence in Uganda.

1. **Quality Excellence:** From the outset, MGML was founded on the principle of uncompromising quality. Every product and service bearing our name reflects our commitment to excellence, setting new standards and exceeding expectations.



2. **Customer-Centricity:** At MGML, our customers are at the heart of everything we do. We believe in building lasting relationships based on trust, transparency, and a deep understanding of their needs. By prioritizing customer satisfaction above all else, we strive to deliver solutions that inspire confidence and drive success.
3. **Innovation Leadership:** We embrace innovation as the driving force behind our success. With a culture of creativity, curiosity, and continuous improvement, we foster a spirit of innovation that fuels our quest to push the boundaries of possibility and pioneer new horizons in MGML.
4. **Integrity and Ethics:** Integrity is the cornerstone of our business. We conduct ourselves with honesty, transparency, and ethical behavior, earning the trust and respect of our partners, customers, and employees alike. We believe in doing what is right, even when no one is watching.
5. **Collaborative Partnership:** We value collaboration and teamwork, recognizing that our collective strength and diverse perspectives are essential to achieving our shared goals. By fostering open communication, mutual respect, and a spirit of collaboration, we empower our employees to unleash their full potential and drive innovation.
6. **Sustainability and Social Responsibility:** As stewards of the environment and members of the global community, we are committed to sustainable business practices and social responsibility. We strive to minimize our environmental footprint, support local communities, and make a positive impact on society through our actions and initiatives.

1.6. Address

The Supplier's address is:

Metrox Gold Mining Limited (MGML)

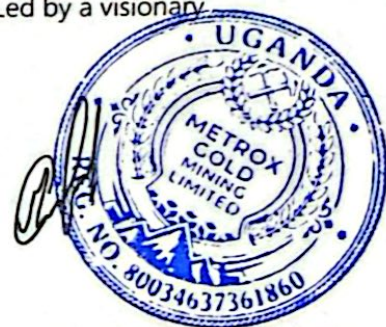
Bardege Division, Bardege Parish, 3B Airfield Road, Gulu Uganda

Tel: 256 774270584

Email: metroxcorp@gmail.com

1.7 Firm's Personnel

At the heart of Metrox Gold Mining Limited lies a meticulously assembled team of professionals, each contributing their unique talents and expertise to drive our mission forward. Led by a visionary,



leadership team with decades of combined experience in Uganda our employees embody our core values of quality, integrity, and innovation in every aspect of their work. From our technical experts pioneering groundbreaking solutions to our sales and marketing professionals forging lasting relationships with customers, every member of our team plays an integral role in our success. Behind the scenes, our operations and logistics personnel ensure seamless coordination and timely delivery, while our dedicated customer support team provides unparalleled assistance to our valued clients. Together, our personnel form a tightly knit, collaborative ensemble committed to exceeding expectations, shaping the future of Uganda, and delivering excellence at every turn.

1.7. MGML's Organizational and Management Structure

Organizational structure

Our organizational structure is finely tuned to optimize efficiency, foster innovation, and facilitate seamless collaboration across all departments. Our structure is characterized by a combination of functional departments and cross-functional teams, ensuring that we can effectively address diverse challenges and capitalize on emerging opportunities. Each functional department, including research and development, manufacturing, sales and marketing, customer support, operations, and finance, operates with clear objectives and responsibilities. Within these departments, teams work in tandem to achieve specific goals while maintaining alignment with the broader organizational mission. Moreover, our flat hierarchy promotes a culture of openness and empowerment, allowing employees at all levels to contribute ideas, share feedback, and take ownership of their work. This inclusive approach not only enhances communication and decision-making but also fosters a sense of ownership and accountability among our team members, driving overall organizational success

Management Structure

At the helm of Metrox Gold Mining Limited is an experienced executive leadership team comprising seasoned industry professionals who provide strategic vision and direction. This team sets the overarching goals and priorities for the organization, guiding decision-making and ensuring alignment with our long-term objectives. Reporting directly to the executive leadership team are departmental managers, each responsible for overseeing the day-to-day operations



and performance of their respective departments. These managers play a pivotal role in translating strategic directives into actionable plans, allocating resources effectively, and driving performance within their teams. Additionally, within each department, dedicated team leaders are appointed to provide supervision and support to individual teams or project groups, ensuring that projects are executed efficiently and objectives are met on time and within budget. Together, our management structure provides the framework for effective leadership, operational excellence, and strategic execution, enabling MGML to remain agile, responsive, and competitive in the ever-evolving marketplace.

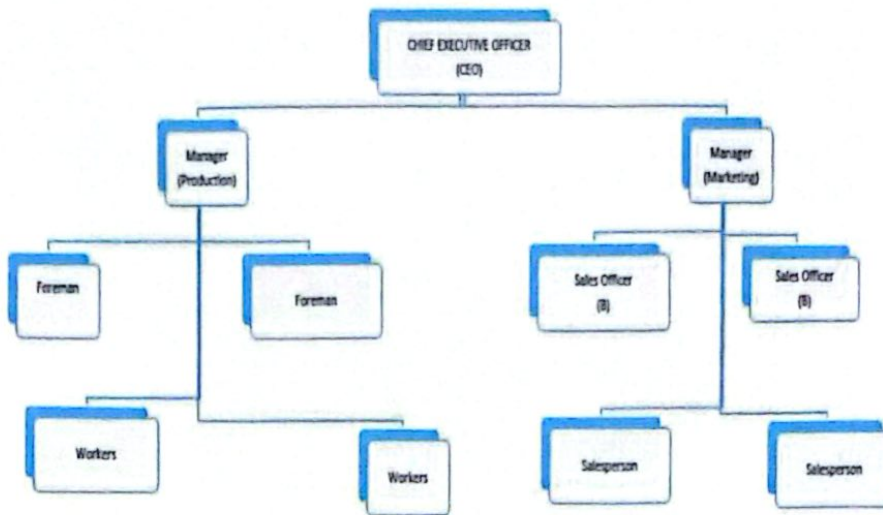
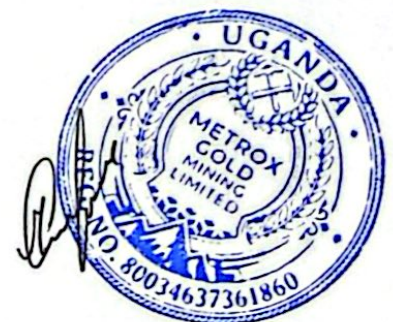


Figure 1 MGML's ORGANISATIONAL STRUCTURE



2. SCOPE OF SUPPLIES

Our company is proud to offer a diverse range of business activities aimed at supporting the vibrant economy of Uganda. Through our extensive network of suppliers and patterns, we provide comprehensive solutions to meet the needs of various industries and sectors across the country. One of our core offerings include;

- Gold Production
- Financial Investments
- Real estate Development
- Technology Solutions
- Renewable Energy Projects
- Raw material Supply
- Manufacturing and production services
- Distribution and logistics
- Retail and whole sale trade
- Construction and infrastructure services
- Technology and IT Solutions
- Mining operations

2.1. Market Presence

Metrox Gold Mining Limited has a global footprint, with a strong presence in key markets. Our strategic initiatives and collaborative ventures contribute to a robust market standing, fostering growth and sustainability.

2.2. Services and Products

Diversified Portfolio: Our extensive portfolio encompasses a range of services and products designed to meet the evolving needs of our diverse clientele. From financial solutions to cutting-edge technology services, Metrox Gold Mining Limited is committed to delivering excellence in every endeavor.



2.3. Highlighted Offerings

- Gold Production
- Investment Advisory
- Real Estate Planning and Development
- Technology Consultancy
- Renewable Energy Solutions
- Mining operations

2.4. Our Clients and Partners

Clientele Overview: We take pride in our diverse and esteemed clientele, ranging from individual investors to multinational corporations. Our client-centric approach and personalized solutions have forged enduring relationships.

Strategic Partnerships: Metrox Gold Mining Limited values collaborative partnerships. By aligning with reputable organizations, institutions, and industry leaders, we enhance our capabilities, foster innovation, and create a positive impact on the business ecosystem.

2.5. Corporate Social Responsibility (CSR)

Social Initiatives: As a socially responsible entity, Metrox Gold Mining Limited actively engages in initiatives aimed at community development, education, and healthcare. Our commitment goes beyond profits, extending to meaningful contributions to society.

Environmental Sustainability Efforts: Acknowledging our responsibility to the environment, we undertake sustainable practices and invest in eco-friendly projects. Metrox Gold Mining Limited is dedicated to minimizing its ecological footprint and promoting environmental stewardship.

Community Involvement: Through various community outreach programs, Metrox Gold Mining Limited actively participates in local initiatives, contributing to the well-being and prosperity of communities we operate in.



2.6. Financial Overview

Fiscal Strength: Metrox Gold Mining Limited maintains a robust financial position, underpinned by sound fiscal management and strategic investment decisions. Our financial stability is a testament to our prudent approach and commitment to long-term value creation.

Investment Portfolio: With a diverse investment portfolio spanning various sectors, Metrox Gold Mining Limited strategically allocates resources to maximize returns and minimize risk. Our investment decisions are guided by thorough market analysis and a forward-looking approach.

2.7. Innovation and Technology

Technological Integration: In a rapidly evolving technological landscape, Metrox Gold Mining Limited embraces innovation. We leverage cutting-edge technologies to enhance operational efficiency, deliver superior services, and stay at the forefront of industry advancements.

Research and Development Initiatives: Our commitment to innovation is evident through ongoing research and development initiatives. By investing in R&D, Metrox Gold Mining Limited anticipates industry trends, identifies opportunities, and pioneers solutions that shape the future.

3. Quality Assurance.

At Metrox Gold Mining Limited, quality assurance is ingrained in every aspect of our operations, ensuring that we consistently deliver exceptional products and services to our clients in Uganda. We adhere to stringent quality control measures throughout the supply chain, starting from the sourcing of raw materials to the final delivery of goods and services.

Our commitment to quality begins with the careful selection of suppliers and partners who share our values and uphold high standards of integrity and reliability. We conduct thorough vetting processes and regular audits to assess their compliance with quality and ethical standards.

Moreover, we implement robust quality management systems within our own facilities, incorporating best practices and industry standards to optimize efficiency and minimize errors. Our manufacturing and production processes undergo rigorous testing and



inspection protocols to ensure that every product meets or exceeds the specified requirements and regulatory standards. We invest in state-of-the-art technology and equipment to enhance precision and consistency in our operations, while our skilled workforce undergoes continuous training and development to stay abreast of the latest techniques and advancements in their respective fields.

In the realm of distribution and logistics, we maintain strict protocols to safeguard the integrity of products during transit and storage, including temperature-controlled facilities for perishable items and secure handling procedures for sensitive goods. Our commitment to quality extends to customer service, where we prioritize responsiveness, transparency, and accountability in addressing client inquiries, feedback, and concerns.

Furthermore, we are committed to sustainability and environmental stewardship, integrating eco-friendly practices and materials into our operations wherever possible. From energy-efficient facilities to eco-friendly packaging solutions, we strive to minimize our ecological footprint and contribute to the long-term well-being of our planet.

Overall, our comprehensive quality assurance framework underscores our unwavering dedication to excellence and customer satisfaction, positioning us as a trusted partner for businesses seeking uncompromising quality and reliability in Uganda.

3.1. Quality and Compliance

Quality Control Measures: Metrox Gold Mining Limited adheres to stringent quality control measures across all its operations. Our commitment to quality ensures that our services and products meet or exceed industry standards, fostering trust among our stakeholders.

4. Health and Safety

Safety Protocols: Metrox Gold Mining Limited prioritizes the health and safety of its employees and stakeholders. Stringent safety protocols are implemented across all operations, ensuring a secure working environment.

Occupational Health Initiatives: In addition to physical safety, we actively promote employee well-being through comprehensive occupational health initiatives. Regular health check-ups, wellness programs, and counseling services contribute to a holistic approach to health.

